

Historic, archived document

Do not assume content reflects current scientific knowledge, policies, or practices.

2.0
2.81

Howell Nurseries

BOYDS BRIDGE ROAD

KNOXVILLE, TENNESSEE

Phone: 3-2426

SWEETWATER, TENNESSEE

Autumn
1938

PRICE - LIST

Spring
1939



THIS PRICE-LIST is supplementary to and a part of our regular descriptive catalogue, and is issued periodically. In it you are likely to find items not listed in the catalogue; on the other hand, some items in the catalogue will not be priced in this list, as our stock varies from season to season. Our aim is to have the old standard varieties as well as the best of the new ones.

You are invited cordially to come out to the nursery to see our stock as it grows in the fields. If you are interested in plants, we feel sure that we can make your visit of interest, as we delight in showing our stock. We wish to be of service to you should you have problems in either growing or planting. Do not forget to come out and ramble around. If you want something that we do not have, we will try to secure it.

If you have not received our descriptive list, or have lost your copy, we will be pleased to send you another.



Garden of Hardy Azaleas. Amoena in circle

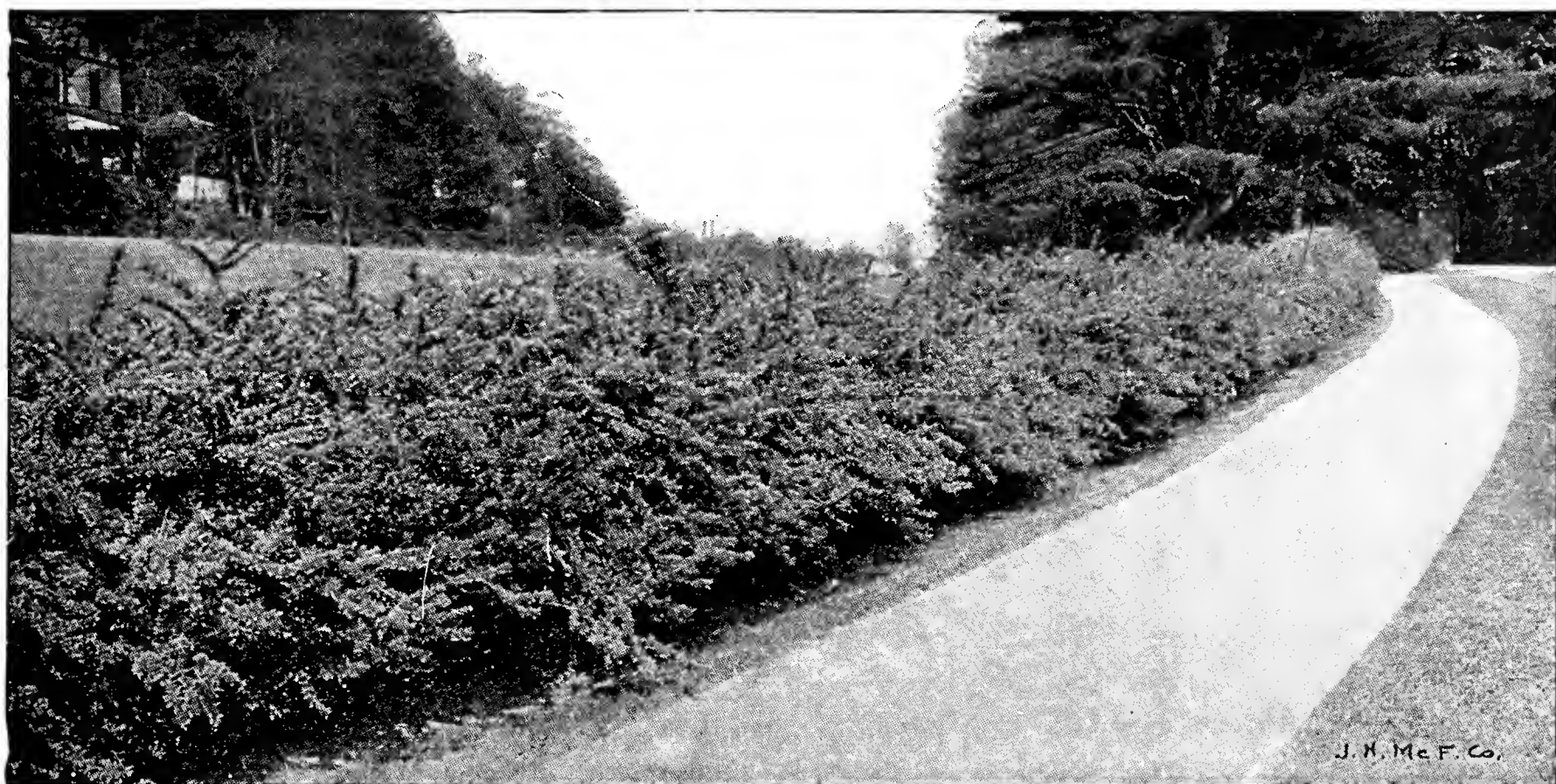
This Price-List is arranged alphabetically for your convenience in using our descriptive Catalogue. All previously published quotations are canceled by this List.

Plants selected and tagged at the nursery are charged for individually according to value, and these prices do not apply.

Plants marked B&B are balled and burlapped for greater safety in handling and planting.

See our descriptive Catalogue for terms of sale. We do not guarantee plants to grow, but if we think that proper care and attention have been given them, we will replace at half price all plants that have died the first season.

Abelia grandiflora. 18 to 24 in., B&B.....	Each \$0 50	Ampelopsis quinquefolia. 2-yr.....	Each \$0 50
2 to 3 ft., B&B.....	75	A. veitchi. 2-yr.....	50
Heavy cut-back specimens, B&B.....	1 00	Aralia pentaphylla. 2 to 3 ft.....	50
A. grandiflora, Edward Goucher. An absolutely new plant with a great future.		3 to 4 ft.....	75
2-yr., B&B.....	1 50	Larger specimens priced on application.	
Abies concolor. 18 to 24 in., B&B.....	2 00	A. spinosa. 2 to 3 ft.....	50
Acer palmatum. 4 to 5 ft., B&B.....	3 50	3 to 4 ft.....	75
Larger specimens priced on application.		4 to 5 ft.....	1 00
A. palmatum atropurpureum. 2 to 3 ft., B&B.	3 50	5 to 6 ft.....	1 50
3 to 4 ft., B&B.....	5 00	Aronia arbutifolia. 3 ft.....	50
4 to 5 ft., B&B.....	7 50	A. arbutifolia brilliantissima. 2 to 3 ft.....	50
A. platanoides. 8 to 10 ft.....	2 50	3 to 4 ft.....	75
10 to 12 ft.....	3 50	A. melanocarpa. 2 to 3 ft.....	50
12 to 14 ft.....	6 00	Aucuba japonica. 18 to 24 in., B&B.....	2 50
14 to 16 ft.....	10 00	2 to 3 ft., B&B.....	3 50
A. platanoides schwedleri. 8 to 10 ft.....	3 50	A. japonica variegata. 12 to 18 in., B&B....	1 50
A. rubrum. 8 to 10 ft.....	3 50	18 to 24 in., B&B.....	2 50
A. saccharum. 6 to 8 ft.....	1 50	2 to 3 ft., B&B.....	3 50
8 to 10 ft.....	2 50	Azaleas, Japanese Evergreen	
10 to 12 ft.....	3 00	Azalea amoena. 15 in., B&B.....	1 50
14 to 16 ft.....	4 00	18 in., B&B.....	2 00
16 to 18 ft.....	5 00	2 ft., B&B.....	2 50
Actinidia arguta. 2-yr.....	1 50	A., Benigiri. 15 in., B&B.....	1 50
Æsculus pavia. 12 to 18 in.....	1 00	18 in., B&B.....	2 00
Akebia quinata. 2-yr.....	50	2 to 3 ft., B&B.....	3 50
Albizzia julibrissin. 2 to 3 ft.....	75	A., Carmen. 18 to 24 in., B&B.....	2 00
3 to 4 ft.....	1 00	A., Christmas Cheer. 15 in., B&B.....	1 50
4 to 6 ft.....	1 25	18 in., B&B.....	2 00
6 to 8 ft.....	1 50	A., Cleopatra. 18 to 24 in., B&B.....	2 00
8 to 10 ft.....	2 50	A., Fujimoyo. 18 to 24 in., B&B.....	2 00
Larger specimens priced on application.		A. hinodegiri. 12 in., B&B.....	1 00
Amelanchier canadensis. 8 to 10 ft.....	1 50	15 in., B&B.....	1 50
Amorpha fruticosa. 2 to 3 ft.....	50	18 in., B&B.....	2 00
3 to 4 ft.....	75		

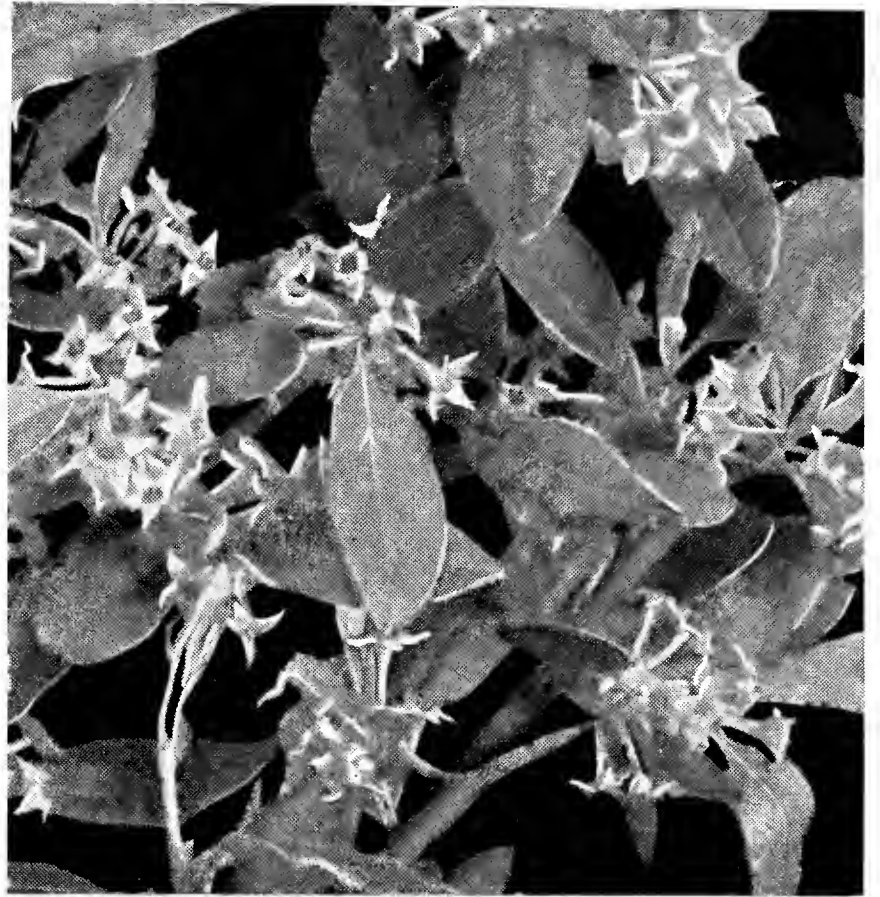


Japanese Barberry (*Berberis thunbergii*)

Azalea, Hinomayo. 12 in., B&B.....	Each	\$1 00	<i>Berberis thunbergii</i> . 12 to 15 in.....	Each	\$0 35
15 in., B&B.....		1 50	15 to 18 in.....		50
18 in., B&B.....		2 00	2 to 3 ft.....		75
2 ft., B&B.....		2 50	<i>B. thunbergii atropurpurea</i> . 12 to 15 in.....		50
2 to 3 ft., B&B.....		3 50	15 to 18 in.....		75
<i>A. indica alba</i> . 18 in., B&B.....		1 50	18 to 24 in.....		1 00
2 ft., B&B.....		2 50	2 to 3 ft., B&B.....		1 50
<i>A. kaempferi</i> . 18 in., B&B.....		2 00	<i>B. thunbergii pluriflora erecta</i> .		
<i>A.</i> , Koster Hybrids. 12 to 15 in., B&B.....		1 50	18 to 24 in., B&B.....		1 00
15 to 18 in., B&B.....		2 00	2 to 2½ ft., B&B.....		1 50
18 to 24 in., B&B.....		2 50	<i>B. wilsonae</i> . 18 to 24 in., B&B.....		1 00
24 to 30 in., B&B.....		3 00	<i>Betula alba</i> . 2 to 3 ft.....		1 00
<i>A. ledifolia alba</i> . 15 to 18 in., B&B.....		1 50	7 to 8 ft.....		2 00
<i>A.</i> , Louise. 2 to 2½ ft., B&B.....		2 50	<i>B. alba pendula laciniata</i> . 7 to 8 ft.....		5 00
<i>A. macrantha</i> . 12 in., B&B.....		1 00	<i>B. lenta</i> . 5 to 7 ft.....		1 50
15 in., B&B.....		1 50	<i>Bignonia</i> , Mme. Gallen. 3-in. pots.....		50
18 in., B&B.....		2 00	<i>Boussingaultia baselloides</i> . Bulbs.....		25
21 in., B&B.....		2 50	<i>Buddleia alternifolia</i> . 3 to 4 ft.....		1 00
<i>A. poukhanensis</i> . 12 in., B&B.....		1 00	<i>B. lindleyana</i> . 2 to 3 ft.....		75
15 in., B&B.....		1 50	<i>B. variabilis</i> . 2 to 3 ft.....		50
18 in., B&B.....		2 00	<i>B. variabilis</i> , Ile de France. 2 to 3 ft.....		50
<i>A.</i> , Snow. 12 to 15 in., B&B.....		1 50	3 to 4 ft.....		75
<i>A. yodogawa</i> . 2 to 3 ft., B&B.....		2 50	<i>Buxus sempervirens</i> . 10 to 12 in., B&B.....		1 00
Larger specimens of all Azaleas priced on application.			12 to 15 in., B&B.....		1 50
Azaleas, Native			15 to 18 in., B&B.....		2 00
<i>Azalea arborescens</i> .			18 to 24 in., B&B.....		2 50
Nice plants, B&B.....	\$2.00 and	2 50	2 to 2½ ft., B&B.....		5 00
<i>A. calendulacea</i> . Nice plants, B&B. \$2.00 and		2 50	2½ to 3 ft., B&B.....		6 00
<i>A. canescens</i> . Nice plants, B&B.....		2 00	<i>B. sempervirens aurea</i> . B&B.		
<i>A. nudiflora</i> . Nice plants, B&B.....		2 00	Large specimens priced on application.		
<i>A. vaseyi</i> . Nice plants, B&B.....		2 00	<i>B. sempervirens suffruticosa</i> . 3 to 4 in., B&B.....		25
<i>Baccharis halimifolia</i> . 2 to 3 ft.....		1 00	4 to 6 in., B&B.....		35
4 to 5 ft.....		1 50	6 to 8 in., B&B.....		50
<i>Bambusa aurea</i> . Clumps.....		1 00	8 to 10 in., B&B.....		1 00
<i>B. palmata</i> . Clumps.....		1 00	<i>Callicarpa americana</i> . 2 to 3 ft.....		50
<i>B.</i> , unnamed dwarf varieties. Small.....		50	3 to 4 ft.....		75
Large.....		1 00	<i>C. purpurea</i> . 2 to 3 ft.....		50
<i>Benzoin aestivale</i> . 4 to 5 ft.....		1 00	<i>Calluna vulgaris</i> . 8 to 10 in., B&B.....		75
<i>Berberis ilicifolia</i> . 2 to 3 ft., B&B.....		1 50	12 to 15 in., B&B.....		1 00
<i>B. julianae</i> . 4-yr., B&B.....		1 50	<i>Calycanthus floridus</i> . 2 to 3 ft.....		50
6-yr., B&B.....		2 50	<i>Caryopteris mastacanthus</i> . 18 to 24 in.....		50
<i>B. mentorensis</i> . 1½ to 2 ft., B&B.....		2 00	2 to 3 ft.....		75
2 to 3 ft., B&B.....		2 50	<i>Catalpa bungei</i> .		
<i>B. sargentiana</i> . 12 to 18 in., B&B.....		1 50	2-yr. heads, budded on 5 to 6-ft. stems..		1 50
18 to 24 in., B&B.....		2 00	3-yr. heads, budded on 5 to 6-ft. stems..		2 50
2 to 3 ft., B&B.....		2 50			

	Each		Each
<i>Castanea mollissima</i> . 2 to 3 ft.	\$1 00	<i>Chamaecyparis pisifera plumosa aurea</i> .	
3 to 4 ft.	1 25	2 to 3 ft., B&B.	\$1 50
4 to 5 ft.	1 50	3 to 4 ft., B&B.	2 00
5 to 6 ft.	1 75	<i>C. pisifera squarrosa veitchi</i> .	
6 to 8 ft.	2 00	18 to 24 in., B&B.	1 50
8 to 10 ft.	2 50	<i>Chamaedaphne calyculata</i> . 12 to 15 in., B&B.	1 50
<i>C. pumila</i> . 2 to 3 ft.	1 00	15 to 18 in., B&B.	2 00
3 to 4 ft.	1 50	<i>Chionanthus virginica</i> . 2 to 3 ft., B&B.	1 50
<i>Ceanothus americanus</i> . 18 to 24 in.	50	3 to 4 ft., B&B.	2 00
2 to 2½ ft.	75	4 to 5 ft., B&B.	2 50
<i>C.</i> , Gloire de Versailles. 12 to 18 in., B&B.	1 00	5 to 6 ft., B&B.	3 50
18 to 24 in., B&B.	1 50	<i>Citrus trifoliata</i> . 2 to 3 ft.	75
2 to 3 ft., B&B.	2 00	3 to 4 ft.	1 00
<i>Cedrus atlantica</i> . 18 to 24 in., B&B.	1 50	<i>Cladrastis lutea</i> . 2 to 3 ft.	50
2 to 3 ft., B&B.	2 50	3 to 4 ft.	75
3 to 4 ft., B&B.	3 50	5 to 6 ft.	1 00
<i>C. atlantica glauca</i> . 12 to 14 in., B&B.	17 50	<i>Clematis jackmani</i> . 2-yr.	1 00
<i>C. deodara</i> . 18 to 24 in., B&B.	1 00	<i>C.</i> , Mme. Edouard Andre. 2-yr.	1 00
2 to 3 ft., B&B.	1 50	<i>C. paniculata</i> . 3 to 4 ft.	50
3 to 4 ft., B&B.	2 00	<i>Clethra alnifolia</i> . 2 to 3 ft.	75
4 to 5 ft., B&B.	2 50	Larger clumps.	1 00
<i>C. libani</i> . 18 to 24 in., B&B.	1 50	<i>Colutea arborescens</i> . 18 to 24 in.	50
2 to 3 ft., B&B.	2 00	3 to 4 ft.	75
Larger specimens priced on application.		<i>Comptonia asplenifolia</i> . 12 to 18 in.	50
<i>Celastrus orbiculatus</i> . 2 to 3 ft.	50	18 to 24 in.	75
3 to 4 ft.	75	<i>Cornus florida</i> . 2 to 3 ft., B&B.	1 00
<i>C. scandens</i> . 2 to 3 ft.	50	3 to 4 ft., B&B.	1 25
Large plants.	1 00	4 to 5 ft., B&B.	1 50
<i>Cephalotaxus fortunei</i> . 18 to 24 in., B&B.	1 00	<i>C. florida plena</i> . 4 to 5 ft., B&B.	3 50
2 to 3 ft., B&B.	1 50	8 to 10 ft., B&B.	6 00
3 to 4 ft., B&B.	2 50	<i>C. florida rubra</i> . 3 to 4 ft., B&B.	1 50
Larger specimens priced on application.		4 to 5 ft., B&B.	2 00
<i>C. harringtonia fastigiata</i> . 18 to 24 in., B&B.	2 00	5 to 6 ft., B&B.	2 50
2 to 2½ ft., B&B.	3 00	6 to 8 ft., B&B.	3 50
2½ to 3 ft., B&B.	4 00	Larger specimens priced on application.	
Larger specimens priced on application.		<i>C. florida salicifolia</i> . 3 to 4 ft., B&B.	10 00
<i>Cercis canadensis</i> . 2 to 3 ft.	50	<i>C. florida welchi</i> . 3 to 4 ft., B&B.	3 50
3 to 4 ft.	75	<i>C. florida</i> , Wine Red. 3 to 4 ft., B&B.	2 50
4 to 5 ft.	1 00	5 to 6 ft., B&B.	3 50
<i>Chamaecyparis obtusa</i> . 2 to 3 ft., B&B.	1 50	6 to 8 ft., B&B.	6 00
3 to 4 ft., B&B.	2 00	8 to 10 ft., B&B.	7 50
4 to 5 ft., B&B.	2 50	<i>C. kousa</i> . 3 to 4 ft., B&B.	2 00
Larger specimens priced on application.		<i>C. officinalis</i> . 3 to 4 ft.	75
<i>C. obtusa compacta</i> . 2 to 3 ft., B&B.	2 00	4 to 5 ft.	1 00
3 to 4 ft., B&B.	2 50	6 to 8 ft.	1 50
<i>C. obtusa crispata</i> . 4 to 5 ft., B&B.	3 50	<i>C. sanguinea</i> . 6 to 8 ft.	75
5 to 6 ft., B&B.	5 00	<i>C. stolonifera</i> . 4 to 5 ft.	1 00
6 to 7 ft., B&B.	7 50	<i>Corylus americana</i> . 18 to 24 in.	50
<i>C. obtusa nana</i> . 18 to 24 in., B&B.	2 50	2 to 3 ft.	75
2 to 2½ ft., B&B.	3 50	<i>Cotoneaster divaricata</i> . 3 to 4 ft., B&B.	1 50
2½ to 3 ft., B&B.	5 00	4 to 5 ft., B&B.	2 00
3 to 4 ft., B&B.	7 50	<i>C. francheti</i> . 2 to 3 ft., B&B.	1 50
<i>C. pisifera</i> . 2 to 3 ft., B&B.	1 50	3 to 4 ft., B&B.	2 00
3 to 4 ft., B&B.	2 00	<i>C. horizontalis</i> . 12 to 18 in., B&B.	1 00
4 to 5 ft., B&B.	3 00	18 to 24 in., B&B.	1 50
5 to 6 ft., B&B.	4 00	2 to 3 ft., B&B.	2 00
<i>C. pisifera argentea</i> . 2 to 3 ft., B&B.	2 50	<i>C. horizontalis perpallida</i> . 12 to 18 in., B&B.	1 00
3 to 4 ft., B&B.	4 00	18 to 24 in., B&B.	1 50
4 to 5 ft., B&B.	6 00	2½ to 3 ft., B&B.	2 00
<i>C. pisifera aurea</i> . 2 to 3 ft., B&B.	1 50	<i>C. microphylla</i> . 12 to 18 in., B&B.	1 00
4 to 5 ft., B&B.	3 50	18 to 24 in., B&B.	1 50
5 to 6 ft., B&B.	5 00	2 to 3 ft., B&B.	2 00
6 to 7 ft., B&B.	6 00	<i>C. salicifolia</i> . 18 to 24 in., B&B.	1 50
<i>C. pisifera filifera</i> . 2 to 3 ft., B&B.	1 50	2 to 3 ft., B&B.	2 00
Larger specimens priced on application.		3 to 4 ft., B&B.	2 50
<i>C. pisifera filifera aurea</i> . 18 to 24 in., B&B.	1 50	<i>Crataegus cordata</i> . 6 to 8 ft., B&B.	5 00
2 to 3 ft., B&B.	2 50	<i>Cryptomeria japonica</i> . B&B.	
4 to 5 ft., B&B.	3 50	Larger specimens priced on application.	
5 to 6 ft., B&B.	5 00	<i>Cunninghamia lanceolata</i> . 12 to 18 in., B&B.	1 50
<i>C. pisifera plumosa</i> . 2 to 3 ft., B&B.	1 50	18 to 24 in., B&B.	2 00
3 to 4 ft., B&B.	2 00	2 to 3 ft., B&B.	2 50
4 to 5 ft., B&B.	2 50	3 to 4 ft., B&B.	3 50
5 to 6 ft., B&B.	3 50	4 to 5 ft., B&B.	5 00

	Each
Cydonia japonica. 2 to 3 ft.....	\$0 50
C. japonica alba. 12 to 18 in.....	75
C. japonica rosea. 2 to 3 ft.....	50
3 to 4 ft.....	75
C. japonica rubra. 2 to 3 ft.....	50
3 to 4 ft.....	75
C. japonica, Salmon. 2 to 3 ft.....	50
3 to 4 ft.....	75
Dasylyrion texanum. 2-yr.....	75
3-yr.....	1 00
4-yr.....	1 25
Deutzia gracilis. 12 to 18 in.....	50
18 to 24 in.....	75
D. gracilis rosea. 18 to 24 in.....	50
2 to 3 ft.....	75
D. lemoinei. 18 to 24 in.....	50
2 to 3 ft.....	75
D. magnifica. 2 to 3 ft.....	75
D. scabra, Pride of Rochester. 2 to 3 ft.....	50
3 to 4 ft.....	75
4 to 5 ft.....	1 00
5 to 6 ft.....	1 50
Diosporus lotus. 2 to 3 ft.....	75
Elaeagnus longipes. 2 to 3 ft., B&B.....	1 50
E. pungens fruitlandi. 18 to 24 in., B&B.....	1 00
2 to 3 ft., B&B.....	1 50
3 to 4 ft.....	2 00
4 to 5 ft.....	2 50
E. pungens reflexa. 2 to 3 ft., B&B.....	1 50
3 to 4 ft., B&B.....	2 00
4 to 5 ft., B&B.....	2 50
E. pungens rotundifolia. 2 to 3 ft., B&B.....	1 50
3 to 4 ft., B&B.....	2 00
E. pungens variegata. 18 to 24 in., B&B.....	2 00
2 to 3 ft., B&B.....	2 50
E. umbellata. 3 to 4 ft.....	75
4 to 5 ft.....	1 00
Erica. 8 to 10 in., B&B.....	1 00
10 to 12 in., B&B.....	1 50
12 to 18 in., B&B.....	2 00
Euonymus alatus. 3 to 4 ft.....	2 00
4 to 5 ft.....	2 50
E. alatus compactus. 3 to 4 ft.....	1 50
E. americanus. 2 to 3 ft.....	75
3 to 4 ft.....	1 00
E. europaeus. 18 to 24 in.....	75
2 to 3 ft.....	1 00
3 to 4 ft.....	1 50
Larger specimens.....	2 50
E. patens. 18 to 24 in.....	1 50
2 to 3 ft.....	2 00
E. radicans. 2-yr.....	50
E. radicans coloratus (acutus). 18 to 24 in..	50
E. radicans variegatus. 2-yr.....	50
Larger specimens.....	1 00
E. radicans vegetus. 12 to 18 in.....	1 00
18 to 24 in.....	1 50
E. sieboldianus britzensis. 18 to 24 in., B&B.	1 50
2 to 3 ft., B&B.....	2 00
Exochorda grandiflora. 5 to 6 ft.....	1 00
Flowering Cherry. See Prunus.	
Flowering Crab. See Malus.	
Flowering Peach. See Prunus.	
Flowering Plum. See Prunus.	
Forsythia intermedia spectabilis. 2 to 3 ft...	50
3 to 4 ft.....	75
F. suspensa. 2 to 3 ft.....	50
F. viridissima. 2 to 3 ft.....	50
3 to 4 ft.....	75
Fraxinus americana. 8 to 10 ft.....	2 00
Gelsemium sempervirens. 5-yr., heavy.....	1 50



Elaeagnus umbellata

	Each
Ginkgo biloba. 3 to 4 ft.....	\$2 50
4 to 5 ft.....	3 00
5 to 6 ft.....	3 50
6 to 7 ft.....	4 00
7 to 8 ft.....	5 00
8 to 10 ft.....	6 00
Gordonia alataamaha. 5 to 6 ft., B&B.....	7 50
Gymnocladus dioica. 3 to 4 ft.....	1 00
4 to 5 ft.....	1 50
6 to 8 ft.....	2 00
Halesia tetraptera. 8 to 10 ft.....	2 50
Hamamelis japonica. 18 to 24 in.....	75
2 to 3 ft.....	1 00
H. virginiana. 2 to 3 ft.....	50
8 to 10 ft.....	1 50
Hedera helix. 2-yr.....	50
H. helix digitata. 2-in. pots.....	25
Hesperaloe parviflora. 2-yr.....	50
3-yr.....	75
4-yr.....	1 00
Hibiscus moscheutos. 1-yr.....	25
2-yr.....	50
H. syriacus Seedling, Single Pink. 3 to 4 ft..	50
4 to 5 ft.....	75
H. syriacus Seedling, Single White. 2 to 3 ft.	50
H. syriacus, Joan of Arc. Double; white.	50
3 to 4 ft.....	50
H. syriacus, Lucy. Red. 3 to 4 ft.....	50
H. syriacus purpureum semi-plena. Lavender.	50
2 to 3 ft.....	50
H. syriacus rubra. Red. 3 to 4 ft.....	50
Hydrangea arborescens. 3 to 4 ft.....	75
H. arborescens grandiflora. 2 to 3 ft.....	50
H. paniculata grandiflora. 2 to 3 ft.....	50
3 to 4 ft.....	75
H. quercifolia. 2 to 3 ft.....	75
Hypericum aureum. 2 to 3 ft.....	50
H. calycinum. 2-yr.....	50
H. moserianum. 12 to 18 in.....	50
Ilex cassine. 2 to 3 ft., B&B.....	1 50
3 to 4 ft., B&B.....	2 00
4 to 5 ft., B&B.....	3 00
5 to 6 ft., B&B.....	5 00

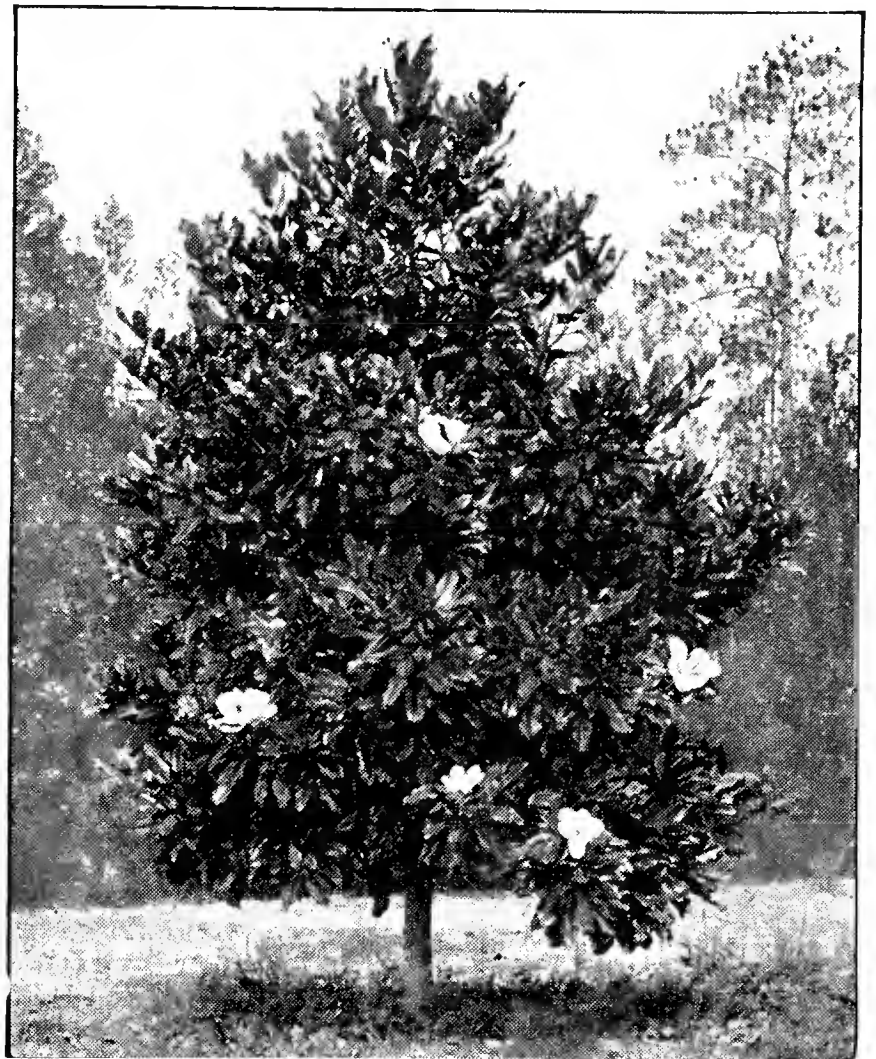


Juniperus chinensis pfitzeriana

	Each
<i>Ilex cassine angustifolia</i> . 2 to 3 ft., B&B.....	\$1 50
3 to 4 ft., B&B.....	2 00
4 to 5 ft., B&B.....	3 00
5 to 6 ft., B&B.....	5 00
<i>I. cornuta</i> . 2 to 3 ft., B&B.....	2 50
3 to 4 ft., B&B.....	3 50
5 to 6 ft., B&B.....	6 00
<i>I. cornuta burfordi</i> . 2 to 3 ft., B&B.....	3 50
3 to 4 ft., B&B.....	5 00
4 to 5 ft., B&B.....	6 00
<i>I. crenata</i> . 2 to 3 ft., B&B.....	2 00
3 to 4 ft., B&B.....	3 50
4 to 5 ft., B&B.....	5 00
6 to 7 ft., B&B.....	7 50
<i>I. crenata</i> , Spreading. 18 to 24 in., B&B.....	2 00
<i>I. crenata rotundifolia</i> . 18 to 24 in., B&B.....	2 00
2 to 3 ft., B&B.....	2 50
<i>I. decidua</i> . 2 to 3 ft., B&B.....	1 50
6 to 8 ft., B&B.....	3 00
8 to 10 ft., B&B.....	4 00
<i>I. glabra</i> . 18 to 24 in., B&B.....	1 00
2 to 3 ft., B&B.....	2 00
<i>I. latifolia</i> . 18 to 24 in., B&B.....	3 50
<i>I. opaca</i> . 2 to 3 ft., B&B.....	2 00
3 to 4 ft., B&B.....	2 50
4 ft., B&B.....	3 00
4 to 5 ft., B&B.....	3 50
5 to 6 ft., B&B.....	4 00
6 to 8 ft., B&B.....	5 00
<i>I. opaca</i> , East Palatka. 3 to 4 ft., B&B.....	3 50
<i>I. opaca howardi</i> . 2 to 3 ft., B&B.....	3 00
3 to 4 ft., B&B.....	4 00
<i>I. opaca</i> , Hume No. 2. 4 to 5 ft., B&B.....	3 00
5 to 6 ft., B&B.....	4 00
<i>I. opaca</i> , New Smyrna. 2 to 3 ft., B&B.....	2 50
3 to 4 ft., B&B.....	3 00
4 to 5 ft., B&B.....	3 50
5 to 6 ft., B&B.....	4 00
6 to 8 ft., B&B.....	5 00
<i>I. pernyi</i> . 18 to 24 in., B&B.....	3 50
<i>I. pernyi veitchi</i> . 3 to 5 ft., B&B.....	5 00
<i>I. verticillata</i> . 3 to 4 ft.....	1 50
<i>I. vomitoria</i> . 2 to 3 ft., B&B.....	2 00
3 to 4 ft., B&B.....	3 00
Large specimen plants of many of the above <i>Ilex</i> can be priced on application.	
<i>Itea virginica</i> . 2 to 3 ft.....	1 00

	Each
<i>Jasminum floridum</i> . 18 to 24 in.....	\$0 50
2 to 3 ft.....	75
<i>J. giraldi</i> . 3-yr.....	75
<i>J. nudiflorum</i> . 2 to 3 ft.....	50
<i>J. officinale</i> . 2 to 3 ft.....	75
<i>J. stephanense</i> . 2 to 3 ft.....	75
<i>Juglans cinerea</i> . 4 to 5 ft.....	1 00
<i>J. regia</i> . 8 to 10 ft.....	2 50
<i>J. sieboldiana</i> . 3 to 4 ft.....	1 00
6 to 8 ft.....	2 00
<i>Juniperus chinensis densa glauca</i> .	
12 to 18 in., B&B.....	1 00
18 to 24 in., B&B.....	1 50
2 to 3 ft.....	2 00
<i>J. chinensis excelsa stricta</i> .	
12 to 18 in., B&B.....	1 00
18 to 24 in., B&B.....	1 50
2 to 3 ft., B&B.....	2 00
<i>J. chinensis japonica</i> . 18 to 24 in., B&B.....	1 50
2 to 3 ft., B&B.....	2 50
<i>J. chinensis japonica aurea</i> .	
12 to 18 in., B&B.....	2 50
<i>J. chinensis japonica globosa aurea</i> .	
12 to 18 in., B&B.....	2 50
<i>J. chinensis mascula</i> . 4 to 5 ft., B&B.....	3 00
<i>J. chinensis neaboriensis</i> . 4 to 5 ft., B&B.....	2 50
5 to 6 ft., B&B.....	3 50
<i>J. chinensis pfitzeriana</i> . 12 to 18 in., B&B.....	1 00
18 to 24 in., B&B.....	1 50
2 to 2½ ft., B&B.....	2 00
2½ to 3 ft., B&B.....	2 50
3 to 4 ft., B&B.....	3 00
4 to 5 ft., B&B.....	4 00
5 to 6 ft., B&B.....	6 00
<i>J. chinensis procumbens</i> .	
12 to 18 in., B&B.....	1 50
18 to 24 in., B&B.....	2 00
2 to 3 ft., B&B.....	2 50
<i>J. communis ashfordi</i> . 2 to 3 ft., B&B.....	1 00
3 to 4 ft., B&B.....	1 50
4 to 5 ft., B&B.....	3 00
6 to 8 ft., B&B.....	3 50
<i>J. communis depressa</i> . 2 to 3 ft., B&B.....	2 00
<i>J. communis depressa plumosa</i> .	
18 to 24 in., B&B.....	1 50
2 to 3 ft., B&B.....	2 00
<i>J. communis hibernica</i> . 2 to 3 ft., B&B.....	1 00
3 to 4 ft., B&B.....	1 50
4 to 5 ft., B&B.....	2 00
5 to 6 ft., B&B.....	3 00
8 to 10 ft., B&B.....	5 00
<i>J. communis Kiyonoi</i> . 6 to 8 ft., B&B.....	3 50
<i>J. communis suecica</i> . 2 to 3 ft., B&B.....	1 50
3 to 4 ft., B&B.....	2 00
<i>J. sabina</i> . 2 to 3 ft., B&B.....	2 00
<i>J., Shuki</i> . 18 to 24 in., B&B.....	1 50
<i>J. squamata meyeri</i> . 10 to 12 in., B&B.....	1 50
18 to 24 in., B&B.....	2 50
<i>J. virginiana</i> (weeping). 6 to 8 ft., B&B.....	3 50
<i>J. virginiana burki</i> . 4 to 5 ft., B&B.....	3 50
5 to 6 ft., B&B.....	5 00
<i>J. virginiana canaerti</i> . 2 to 3 ft., B&B.....	1 50
3 to 4 ft., B&B.....	2 50
4 to 5 ft., B&B.....	3 50
5 to 6 ft., B&B.....	5 00
<i>J. virginiana donaldsoni</i> . 5 to 6 ft., B&B.....	3 50
<i>J. virginiana glauca</i> . 4 to 5 ft., B&B.....	3 00
8 to 10 ft., B&B.....	8 00
<i>J. virginiana globosa</i> . 18 to 24 in., B&B.....	3 50
<i>J. virginiana keteleeri</i> . 4 to 5 ft., B&B.....	3 00
5 to 6 ft., B&B.....	4 00
<i>J. virginiana pyramidiformis</i> .	
4 to 5 ft., B&B.....	4 50

	Each
<i>Juniperus virginiana schottii</i> . 4 to 5 ft., B&B.	\$3 50
5 to 6 ft., B&B.....	4 50
<i>J.</i> , Waukegan. 18 to 24 in., B&B.....	1 50
2 to 3 ft., B&B.....	2 00
<i>Kalmia latifolia</i> . 12 to 18 in., B&B.....	1 50
18 to 24 in., B&B.....	2 00
2 to 3 ft., B&B.....	2 50
<i>Koelreuteria paniculata</i> . 4 to 5 ft.....	1 50
6 to 8 ft.....	2 50
<i>Kolkwitzia amabilis</i> . 2 to 3 ft.....	75
5 to 6 ft.....	1 50
6 to 7 ft.....	2 00
<i>Laburnum vulgare</i> . 5 to 6 ft.....	2 00
6 to 7 ft.....	2 50
<i>Lagerstroemia indica alba</i> . 2 to 3 ft., B&B....	1 00
3 to 4 ft., B&B.....	1 50
<i>L. indica purpurea</i> . 2 to 3 ft., B&B.....	1 00
3 to 4 ft., B&B.....	1 50
<i>L. indica rosea</i> . 3 to 4 ft., B&B.....	1 00
<i>L. indica</i> , William Toovey. 3 to 4 ft., B&B....	1 00
4 to 5 ft., B&B.....	1 50
<i>Laurocerasus caroliniana</i> . 2 to 3 ft., B&B....	1 50
3 to 4 ft., B&B.....	2 50
4 to 5 ft., B&B.....	3 50
Large specimens priced on application.	
<i>L. rotundifolia</i> . 2 to 2½ ft., B&B.....	2 50
<i>L. schipkaensis</i> . 12 to 18 in., B&B.....	1 50
18 to 24 in., B&B.....	2 00
2 to 2½ ft.....	2 50
<i>L.</i> , Strap leaf. 12 to 18 in., B&B.....	2 50
18 to 24 in., B&B.....	3 50
<i>Lespedeza bicolor</i> . 2 to 3 ft.....	50
3 to 4 ft.....	75
<i>L. formosa</i> . 2-yr.....	50
3-yr.....	75
<i>L. penduliflorum</i> . 2-yr.....	75
<i>Leucothoe catesbaei</i> . 18 to 24 in., B&B.....	2 00
2 to 3 ft., B&B.....	2 50
<i>Libocedrus decurrens</i> . 4 to 5 ft., B&B.....	2 50
5 to 6 ft., B&B.....	3 50
6 to 7 ft., B&B.....	5 00
<i>Ligustrum lucidum</i> . 18 to 24 in., B&B.....	1 00
2 to 2½ ft., B&B.....	1 50
2½ to 3 ft., B&B.....	2 50
<i>L. ovalifolium variegatum</i> . 12 to 18 in.....	1 00
2½ to 3 ft.....	2 50
<i>L. quihoui</i> . 3 to 4 ft.....	75
<i>L. sinense</i> . 12 to 18 in..... \$3.00 per 100 ..	
3 to 4 ft..... \$5.00 per 100 ..	
<i>L. sinense pendulum</i> . 2 to 3 ft.....	50
<i>Liquidambar styraciflua</i> . 2 to 3 ft., B&B....	1 50
3 to 4 ft., B&B.....	2 00
4 to 5 ft., B&B.....	2 50
5 to 6 ft., B&B.....	3 00
7 to 8 ft., B&B.....	4 00
10 to 12 ft., B&B.....	5 00
<i>Liriodendron tulipifera</i> . 2 to 3 ft., B&B....	1 00
6 to 7 ft., B&B.....	2 50
<i>Lonicera browni</i> . 2 to 3 ft.....	50
3 to 4 ft.....	75
<i>L. fragrantissima</i> . 2 to 3 ft.....	50
3 to 4 ft.....	75
<i>L. heckrotti</i> . 2-yr.....	50
3-yr.....	75
<i>L. japonica halliana</i> . 2-yr.....	50
<i>L. morrowi</i> . 18 to 24 in.....	50
<i>L. nitida</i> . 15 to 18 in., B&B.....	1 50
<i>L. sempervirens</i> . 2-yr.....	50
3-yr.....	75
<i>L. speciosa</i> . 2 to 3 ft.....	50
3 to 4 ft.....	75
<i>L. tatarica</i> . 3 to 4 ft.....	50
<i>L. tatarica lutea</i> . 18 to 24 in.....	75
<i>L. tatarica rosea</i> . 3 to 4 ft.....	50



Magnolia grandiflora

	Each
<i>Maackia amurensis</i> . 2 to 3 ft.....	\$1 00
<i>Magnolia acuminata</i> . 18 to 24 in.....	1 00
8 to 10 ft.....	2 50
10 to 12 ft.....	5 00
<i>M. glauca</i> . 2 to 3 ft., B&B.....	1 50
3 to 4 ft., B&B.....	2 00
4 to 5 ft., B&B.....	2 50
<i>M. grandiflora</i> . 2 to 3 ft., B&B.....	1 00
3 to 4 ft., B&B.....	1 50
4 to 5 ft., B&B.....	2 50
5 to 6 ft., B&B.....	3 50
<i>M. hypoleuca</i> . 6 to 8 ft.....	2 50
8 to 10 ft.....	3 00
<i>M. kobus</i> . 3 to 4 ft.....	2 00
4 to 5 ft.....	2 50
6 to 8 ft.....	3 50
8 to 10 ft.....	5 00
<i>M. purpurea</i> . 2 to 3 ft., B&B.....	1 00
3 to 4 ft., B&B.....	2 00
4 to 5 ft., B&B.....	3 50
Large specimens priced on application.	
<i>M. salicifolia</i> . 3 to 4 ft., B&B.....	3 50
<i>M. soulangeana</i> . 3 to 4 ft., B&B.....	3 00
4 to 5 ft., B&B.....	4 00
<i>M. stellata</i> . 2 to 3 ft., B&B.....	3 00
3 to 4 ft., B&B.....	4 00
4 to 5 ft., B&B.....	6 00
5 to 6 ft., B&B.....	7 50
<i>Mahonia aquifolium</i> . 18 to 24 in., B&B....	1 50
2 to 3 ft., B&B.....	2 00
<i>M. bealei</i> . 12 to 18 in., B&B.....	2 00
18 to 24 in., B&B.....	2 50
2 to 3 ft., B&B.....	3 00
<i>M. pinnata (fascicularis)</i> . 18 to 24 in., B&B.	2 50
2 to 3 ft., B&B.....	3 00
<i>Malus atrosanguinea</i> . Deep carmine.	
3 to 4 ft.....	2 00
5 to 6 ft.....	3 50
<i>M. bechteli</i> . Pink, rose-like blooms. 2 to 3 ft.	1 50
3 to 4 ft.....	2 00
4 to 5 ft.....	2 50

	Each		Each
<i>Malus eleyi</i> . Red. Very choice. 2 to 3 ft.	\$1 50	<i>Platanus occidentalis</i> . 7 to 8 ft.	\$2 00
3 to 4 ft.	2 00	8 to 10 ft.	2 50
4 to 5 ft.	2 50	<i>Polygonum auberti</i> . 2-yr.	50
5 to 6 ft.	3 50	<i>Populus nigra italica</i> . 2 to 3 ft.	25
<i>M. floribunda</i> . Bright pink flowers shading		4 to 6 ft.	50
to white. 2 to 3 ft.	1 50	6 to 8 ft.	75
3 to 4 ft.	2 00	8 to 10 ft.	1 00
4 to 5 ft.	2 50	<i>Potentilla fruticosa</i> . 2 to 3 ft.	75
<i>M. niedzwetzkyana</i> . Flowers deep pink.		<i>Prunus</i> , Amanogawa. Flowering Cherry.	
3 to 4 ft.	2 00	Semi-double, pale pink flowers.	
4 to 5 ft.	2 50	3 to 4 ft.	2 00
5 to 6 ft.	3 50	4 to 5 ft.	3 00
6 to 7 ft.	4 00	<i>P.</i> , Beni Higan. Flowering Cherry. Pale	
<i>M. prunifolia rinki</i> . Flowers pink. 6 to 7 ft.	4 00	pink flowers. 4 to 5 ft.	2 50
<i>M. purpurea</i> . Flowers deep carmine. 6 to 7 ft.	4 00	5 to 6 ft.	4 00
<i>M. scheideckeri</i> . Double reddish pink flowers.		<i>P. cerasifera pissardi</i> . Purple-leaf Plum.	
3 to 4 ft.	2 00	Pink flowers. 3 to 4 ft.	1 50
<i>M. sieboldi</i> . Blush-pink flowers. 5 to 6 ft.	3 50	4 to 5 ft.	2 00
<i>Nandina domestica</i> . 12 to 18 in., B&B.	75	6 to 7 ft.	3 00
18 to 24 in., B&B.	1 00	<i>P. glandulosa rosea</i> . Pink-flowering Almond.	
2 to 3 ft., B&B.	1 50	18 to 24 in.	50
3 to 4 ft., B&B.	2 50	2 to 2½ ft.	75
4 to 5 ft., B&B.	4 00	<i>P.</i> , Kanzan. Flowering Cherry. Deep pink,	
<i>Neviusia alabamensis</i> . 18 to 24 in., B&B.	75	very double flowers. 4 to 5 ft.	2 50
<i>Nyssa sylvatica</i> . 4 to 5 ft., B&B.	2 00	5 to 6 ft.	3 50
<i>Ophiopogon</i> . 2-yr.	50	6 to 7 ft.	5 00
<i>Osmanthus aquifolium</i> . 18 to 24 in., B&B.	2 00	<i>P.</i> , Mount Fuji. Flowering Cherry. Double	
2 to 3 ft., B&B.	3 00	white flowers. 3 to 4 ft.	2 50
3 to 4 ft., B&B.	3 50	4 to 5 ft.	3 50
<i>Ostrya virginiana</i> . 8 to 10 ft.	2 50	<i>P.</i> , Naden. Flowering Cherry. Pale pink,	
<i>Oxydendrum arboreum</i> . 2 to 3 ft., B&B.	1 50	semi-double flowers. 2 to 3 ft.	1 50
5 to 6 ft., B&B.	3 50	3 to 4 ft.	2 50
<i>Pachysandra terminalis</i> . 2-yr.	25	4 to 5 ft.	3 50
<i>Paliurus spina-christi</i> . 3 to 4 ft., B&B.	2 50	<i>P.</i> , Othello. Purple-leaf Plum. 2 to 3 ft.	1 00
<i>Paulownia imperialis</i> . 8 to 10 ft.	2 00	3 to 4 ft.	1 50
<i>Phellodendron sachalinense</i> . 18 to 24 in.	75	4 to 5 ft.	2 00
<i>Philadelphus coronarius</i> . 3 to 4 ft.	50	<i>P. persica alba</i> . White-flowering Peach.	
<i>P. coronarius aureus</i> . 2 to 3 ft.	75	2 to 3 ft.	75
<i>P. cymosus</i> , Coquette. 4 to 5 ft.	75	3 to 4 ft.	1 00
6 to 7 ft.	1 00	5 to 6 ft.	2 50
<i>P. cymosus</i> , Norma. 2 to 3 ft.	75	<i>P. persica rosea</i> . Pink-flowering Peach.	
<i>P. lemoinei</i> , Avalanche. 18 to 24 in.	50	2 to 3 ft.	75
<i>P. virginalis</i> . 2 to 3 ft.	50	3 to 4 ft.	1 00
3 to 4 ft.	75	<i>P. persica rubra</i> . Red-flowering Peach.	
4 to 5 ft.	1 00	2 to 3 ft.	75
<i>Photinia glabra</i> . 18 to 24 in., B&B.	1 50	3 to 4 ft.	1 00
<i>P. serrulata</i> . 2 to 2½ ft., B&B.	3 00	<i>P.</i> , Shirofugen. Flowering Cherry. Flowers	
<i>Picea conica glauca</i> . 2 to 3 ft., B&B.	5 00	pink in bud changing to white as they	
<i>P. excelsa</i> . 2 to 3 ft., B&B.	1 50	expand. 3 to 4 ft.	2 50
3 to 4 ft., B&B.	2 00	4 to 5 ft.	3 50
4 to 5 ft., B&B.	2 50	<i>P. subhirtella pendula</i> . Double-flowering	
5 to 6 ft., B&B.	5 00	Weeping Cherry. Pink flowers. Top	
<i>P. pungens</i> . 2 to 3 ft., B&B.	2 00	budded. 5 to 6 ft.	2 50
3 to 4 ft., B&B.	3 00	6 to 7 ft.	3 50
4 to 5 ft., B&B.	4 00	<i>P. subhirtella pendula</i> . Weeping Flowering	
<i>P. pungens kosteriana</i> . 12 to 18 in., B&B.	2 50	Cherry. Pink flowers. Budded at	
18 to 24 in., B&B.	3 00	ground. 5 to 6 ft.	\$7.50 to 15 00
2 to 2½ ft., B&B.	5 00	<i>P.</i> , Takasago. Flowering Cherry.	
<i>Pieris floribunda</i> . 18 to 24 in., B&B.	2 50	2 to 3 ft.	1 50
<i>P. japonica</i> . 12 to 15 in., B&B.	2 00	3 to 4 ft.	2 00
15 to 18 in., B&B.	2 50	4 to 5 ft.	3 00
18 to 24 in., B&B.	3 00	<i>P. triloba</i> . Double-flowering Plum. White	
2 to 2½ ft., B&B.	4 00	flowers. 5 to 6 ft.	2 50
<i>Pinus nigra</i> . 18 to 24 in., B&B.	1 00	<i>P.</i> , Yoshino. Flowering Cherry. Pale pink	
2 to 3 ft., B&B.	1 50	flowers, centers being stained with	
<i>P. resinosa</i> . 18 to 24 in., B&B.	1 00	purplish pink before they fall.	
2 to 3 ft., B&B.	1 50	4 to 5 ft.	2 50
<i>P. strobus</i> . 2 to 3 ft., B&B.	1 50	5 to 6 ft.	4 00
3 to 4 ft., B&B.	2 00	<i>Pterocarya rhoifolia</i> . 4 to 5 ft.	1 00
4 to 5 ft., B&B.	3 00	5 to 6 ft.	1 50
<i>P. sylvestris</i> . 2 to 3 ft., B&B.	1 50	<i>Pueraria thunbergiana</i> . 2-yr.	50
<i>P.</i> , Tanyosho. B&B.		<i>Punica granatum</i> . 2 to 3 ft.	1 00
Specimens priced on application.			
<i>P. thunbergi</i> . 2 to 3 ft., B&B.	1 50		

	Each		Each
Pyracantha coccinea boundsi.		Salix babylonica. 4 to 5 ft.....	\$0 50
18 to 24 in., B&B.....	\$1 50	5 to 6 ft.....	75
2 to 3 ft., B&B.....	2 00	6 to 7 ft.....	1 00
P. coccinea lalandi. 18 to 24 in., B&B.....	1 00	7 to 8 ft.....	1 50
2 to 3 ft., B&B.....	1 50	8 to 10 ft.....	2 00
Quercus alba. 5 to 6 ft.....	2 00	10 to 12 ft.....	2 50
Q. darlingtonia. 4 to 5 ft., B&B.....	2 50	S. caprea. 2 to 3 ft.....	75
5 to 6 ft., B&B.....	3 50	S. vitellina pendula. 6 to 8 ft.....	1 50
6 to 8 ft., B&B.....	5 00	8 to 10 ft.....	2 00
Q. palustris. 5 to 6 ft.....	1 50	Sambucus nigra aurea. 3 to 4 ft.....	75
7 to 8 ft.....	2 50	Sciadopitys verticillata.	
8 to 10 ft.....	3 00	12 to 15 in., B&B.....	2 50
10 to 12 ft.....	3 50	Larger specimens priced on application.	
Q. rubra. 2 to 3 ft.....	1 00	Smilax laurifolia. 3-in. pots.....	1 00
3 to 4 ft.....	1 50	Sophora japonica. 18 to 24 in.....	75
4 to 5 ft.....	2 00	Spiraea aitchisoni. 2 to 3 ft.....	75
6 to 8 ft.....	3 50	S. billiardi. Pink or white. 3 to 4 ft.....	50
Rhamnus caroliniana. 5 to 6 ft.....	1 50	S. bumalda, Anthony Waterer. 18 to 24 in..	50
R. cathartica. 5 to 6 ft.....	1 00	2 to 3 ft.....	75
R. dahurica. 3 to 4 ft.....	1 50	S. callosa alba. 18 to 24 in.....	75
Rhododendron carolinianum.		S. opulifolia. 2 to 3 ft.....	50
18 to 24 in., B&B.....	2 00	S. prunifolia. 2 to 3 ft.....	50
2 to 3 ft., B&B.....	3 00	3 to 4 ft.....	75
R. catawbiense. 18 to 24 in., B&B.....	2 00	4 to 5 ft.....	1 00
2 to 3 ft., B&B.....	3 00	S. reevesiana. 2 to 3 ft.....	75
R. maximum. 18 to 24 in., B&B.....	2 00	S. thunbergi. 18 to 24 in.....	50
2 to 3 ft., B&B.....	3 00	2 to 3 ft.....	75
Rhodotypos kerrioides. 2 to 3 ft.....	50	S. trichocarpa. 3 to 4 ft.....	75
3 to 4 ft.....	75	S. vanhouttei. 2 to 3 ft.....	50
4 to 5 ft.....	1 00	3 to 4 ft.....	75
Rhus canadensis. 2 to 3 ft.....	50	Stachyurus praecox. 4 to 5 ft.....	2 50
3 to 4 ft.....	75	Stephanandra flexuosa. 2 to 3 ft.....	75
4 to 5 ft.....	1 00	Sterculia platanifolia. 2 to 3 ft.....	1 00
R. cotinus. 2 to 3 ft.....	75	3 to 4 ft.....	1 50
3 to 4 ft.....	1 00	4 to 5 ft.....	2 00
4 to 5 ft.....	1 50	5 to 6 ft.....	2 50
5 to 6 ft.....	1 75	8 to 10 ft.....	3 50
6 to 7 ft.....	2 00	10 to 12 ft.....	5 00
R. typhina laciniata. 2 to 3 ft.....	2 00	Stewartia pentagyna. 2 to 2½ ft.....	2 50
Robinia hispida. 2 to 3 ft.....	50	Styrax japonica. 2 to 3 ft.....	1 00
3 to 4 ft.....	75	3 to 4 ft.....	1 50
Rosa blanda. 2 to 3 ft. Strong.....	75	4 to 5 ft.....	2 00
R., Climbing. 2-yr.....	75	8 to 10 ft.....	3 50
American Pillar. Deep rose.		Symphoricarpos albus. 2 to 3 ft.....	50
Aviateur Bleriot. Buds light orange-yellow;		S. chenaulti. 2 to 3 ft.....	50
flowers creamy yellow, fading to white.		S. vulgaris. 2 to 3 ft.....	50
Bess Lovett. Light crimson.		Syringa, French Hybrids.	
Dorothy Perkins. Light pink.		Alphonse Lavallee. Bluish lilac; double.	
Dr. W. Van Fleet. Flesh-pink.		2 to 3 ft.....	1 00
Emily Gray. Yellow.		Best Blue. Blue. 2 to 3 ft.....	1 00
Gardenia. Buds yellow, fading to white.		Charles the Tenth. Single; reddish violet.	
Heart of Gold. Purplish crimson flowers,		2 to 3 ft.....	1 00
yellow stamens.		Dr. Masters. Double; light pink.	
Jacotte. Warm hues of yellow and coppery		18 to 24 in.....	1 00
red.		Guizot. 2 to 3 ft.....	1 00
Mary Wallace. Warm pink flowers.		Hugo Koster. Single; lilac. 2 to 3 ft.....	1 00
Mermaid. Single, light primrose blooms.		3 to 4 ft.....	1 50
Mme. Gregoire Staechelin. Large pink		Ludwig Spaeth. Dull purple. 2 to 3 ft...	1 00
flowers.		Michel Buchner. Double; pinkish. 2 to 3 ft.	1 00
Paul's Scarlet Climber. Scarlet.		Mme. Casimir Perier. Double; white.	
Primrose. Yellow.		2 to 3 ft.....	1 00
Scorcher. Brilliant red.		3 to 4 ft.....	1 50
Silver Moon. Creamy white.		President Grevy. Double; blue-violet.	
Tausendschon. Variable color, from white		2 to 3 ft.....	1 00
through pink to rose.		Rene Jarry-Desloges. Double; blue.	
R. hugonis. 2 to 3 ft.....	75	2 to 3 ft.....	1 00
3 to 4 ft.....	1 00	Stadig de Rothpletz. Reddish. 2 to 3 ft...	1 00
R. nitida. 2 to 3 ft.....	75	3 to 4 ft.....	1 50
R. polyantha, in variety.....	50		
R. rouletti. Rock-Garden Rose. 2-yr.....	50		
R. rugosa. Red, pink, and white. 2 to 3 ft..	50		
R. setigera. 2 to 3 ft.....	75		



Thuja occidentalis pyramidalis
(Pyramidal Arborvitae)

	Each
<i>Syringa persica</i> . Purple. 3 to 4 ft.....	\$1 00
<i>S. rothomagensis</i> . Lilac. 3 to 4 ft.....	1 00
<i>S. rothomagensis</i> , Sulte. Pinkish lilac. 2 to 3 ft.....	75
<i>S. villosa</i> . Lilac. 3 to 4 ft.....	1 00
<i>S. vulgaris</i> . Lavender. 2 to 3 ft.....	50
3 to 4 ft.....	75
<i>Tamarix africana</i> . 2 to 3 ft.....	50
4 to 5 ft.....	75
<i>T. gallica</i> . 2 to 3 ft.....	50
<i>Thea sinensis bohea</i> . 18 to 24 in., B&B.....	1 50
2 to 3 ft., B&B.....	2 50
3 to 4 ft., B&B.....	3 50
4 to 5 ft., B&B.....	5 00
<i>Thuja occidentalis conica densa</i> . 3 to 4 ft., B&B.....	2 50
4 to 5 ft., B&B.....	3 00
<i>T. occidentalis globosa</i> . 12 to 18 in., B&B.....	1 00
18 to 24 in., B&B.....	1 50
<i>T. occidentalis hoveyi</i> . 3 to 4 ft., B&B.....	2 00
4 to 5 ft., B&B.....	2 50
<i>T. occidentalis plicata pyramidalis</i> . 4 to 5 ft., B&B.....	2 50
<i>T. occidentalis pumila</i> . 4 to 5 ft., B&B.....	3 50
5 to 6 ft., B&B.....	4 00
<i>T. occidentalis pyramidalis</i> . 2 to 3 ft., B&B.....	1 00
3 to 4 ft., B&B.....	1 50
4 to 5 ft., B&B.....	2 50
5 to 6 ft., B&B.....	3 00
8 to 10 ft., B&B.....	6 00
Larger specimens priced on application.	
<i>T. occidentalis wareana</i> . 2 to 3 ft., B&B.....	2 00
3 to 4 ft., B&B.....	3 50
4 to 5 ft., B&B.....	5 00
5 to 6 ft., B&B.....	6 00
<i>T. orientalis</i> . 4 to 5 ft., B&B.....	2 00
5 to 6 ft., B&B.....	3 00
6 to 8 ft., B&B.....	4 00
<i>T. orientalis aurea nana</i> . 12 to 18 in., B&B.....	1 00
18 to 24 in., B&B.....	1 50
2 to 3 ft., B&B.....	2 50

<i>Thuja orientalis aurea conspicua</i> . 2 to 3 ft., B&B.....	Each \$1 50
3 to 4 ft., B&B.....	2 50
<i>T. orientalis bakeri</i> . 2 to 3 ft., B&B.....	1 50
3 to 4 ft., B&B.....	2 00
4 to 5 ft., B&B.....	2 50
5 to 6 ft., B&B.....	3 00
6 to 7 ft., B&B.....	3 50
<i>T. orientalis excelsa</i> . 18 to 24 in., B&B.....	1 50
<i>Tilia americana</i> . 3 to 4 ft.....	1 00
6 to 8 ft.....	2 00
8 to 10 ft.....	3 00
10 to 12 ft.....	3 50
<i>Tsuga canadensis</i> . 2 to 3 ft., B&B.....	1 50
3 to 4 ft., B&B.....	2 00
4 to 5 ft., B&B.....	2 50
5 to 6 ft., B&B.....	3 50
6 to 8 ft., B&B.....	5 00
Larger specimens priced on application.	
<i>T. canadensis</i> , sheared specimens. 3 to 4 ft., B&B.....	2 50
4 to 5 ft., B&B.....	3 00
5 to 6 ft., B&B.....	4 00
6 to 8 ft., B&B.....	6 00
<i>T. caroliniana</i> . 4 to 5 ft., B&B.....	3 50
6 to 8 ft., B&B.....	10 00
<i>Ulmus pumila</i> . 5 to 6 ft.....	1 50
6 to 8 ft.....	2 50
8 to 10 ft.....	3 50
Larger specimens priced on application.	
<i>Viburnum burkwoodi</i> . 18 to 24 in., B&B.....	3 50
<i>V. carlesii</i> . 18 to 24 in., B&B.....	2 50
2 to 3 ft., B&B.....	3 50
<i>V. cassinoides</i> . 2 to 3 ft.....	75
3 to 4 ft.....	1 00
<i>V. dentatum</i> . 3 to 4 ft.....	75
<i>V. opulus</i> . 2 to 3 ft.....	50
3 to 4 ft.....	75
4 to 5 ft.....	1 00
<i>V. opulus sterile</i> . 2 to 3 ft.....	50
3 to 4 ft.....	75
<i>V. prunifolium</i> . 18 to 24 in.....	50
<i>V. rhytidophyllum</i> . 2 to 3 ft., B&B.....	2 00
3 to 4 ft., B&B.....	2 50
4 to 5 ft., B&B.....	3 50
<i>V. tomentosum plicatum</i> . 18 to 24 in.....	50
2 to 3 ft.....	75
3 to 4 ft.....	1 00
5 to 6 ft.....	5 00
<i>V. wrightii</i> . 3 to 4 ft.....	1 00
<i>Vinca major</i> . 2-yr.....	25
<i>V. minor</i> . 2-yr.....	25
<i>Vitex agnus-castus</i> . 2 to 3 ft.....	50
3 to 4 ft.....	75
4 to 5 ft.....	1 00
<i>V. macrophylla</i> . 3 to 4 ft.....	75
4 to 5 ft.....	1 00
Water-Lilies	1 00
<i>Weigela</i> , Eva Rathke. 2 to 3 ft.....	50
3 to 4 ft.....	75
<i>W. hendersoni</i> . 2 to 3 ft.....	50
<i>W.</i> , Heroine. 3 to 4 ft.....	75
<i>W. rosea</i> . 2 to 3 ft.....	50
3 to 4 ft.....	75
4 to 5 ft.....	1 00
<i>Wisteria</i> , American. 18 to 24 in.....	75
2 to 3 ft.....	1 00
<i>W.</i> , Sierra Madre. 4 to 5 ft.....	1 50
<i>W. sinensis</i> . Grafted blooming plants.....	1 50
<i>W. sinensis alba</i> . Grafted blooming plants..	1 50
<i>Yucca filamentosa</i> . 2-yr.....	25
4-yr.....	50
<i>Zanthoxylum schinifolium</i> . 2 to 3 ft.....	1 00
<i>Zelkova serrata</i> . 8 to 10 ft.....	3 50



Perennial Plants for Permanent Gardens

The star (*) preceding a variety name indicates that the plants are adapted to rock-garden use.

Our perennials are priced at 25 cts. each, \$2.50 per dozen (when a dozen of one variety is taken) except where noted

Perennials selected at the nursery and taken with a ball of dirt are priced according to the clump and individually. Under no conditions whatsoever do we guarantee perennials to grow.

Achillea millefolium roseum.
 **A. ptarmica*, The Pearl.
 **A. tomentosa.*
 **Ajuga reptans.*
 **Alyssum rostratum.*
 **A. saxatile compactum.*
Amsonia tabernaemontana.
Anchusa italica, Dropmore.
Anthemis tinctoria.
Aquilegia canadensis.
A., Long-spurred Hybrids.
A., Old-fashioned, Mixed.
 **Arabis alpina.*
 **Arenaria verna.*
Artemisia vulgaris lactiflora.
A. vulgaris, Silver King.
Arundo donax.
 **Asarum canadense.*
Asclepias tuberosa.
 **Aster alpinus.*
A., Birdsong.
 **A.*, Countess of Dudley (dwarf).
A., Daphne.
Astilbe, Ceres, 50 cts. each.
 **Aubrietia deltoidea eyrei.*

Baptisia australis.
Belamcanda chinensis.
Boltonia latisquama.

 **Calamintha alpina.*
 **Callirhoe involucrata.*
Campanula latifolia.
C. pyramidalis.
 **C. rotundifolia.*
Centaurea dealbata.
Centranthus ruber.
Cephalaria tatarica.
 **Cerastium tomentosum.*
Ceratostigma plumbaginoides.
 **Cheiranthus allioni.*

Garden Chrysanthemums

Apollo.
Ceres.
Daphne.
Diana.
Mrs. H. Harrison.
Mars.
Mercury.
Murillo.
Pink Cushion.
Button. Unnamed varieties.
Double.

 **Convallaria majalis.*
Delphinium, Wrexham Hybrids.
 **Dianthus caesius.*
 **D. deltoides.*
 **D. plumarius.*
 **Dicentra eximia.*
D. spectabilis, 50 cts. each.



Digitalis, Giant Shirley.
 **Epimedium macranthum violaceum.*
Eupatorium coelestinum.
 **Euphorbia myrsinites.*
 **Festuca glauca.*
 **Filipendula hexapetala.*
Gaillardia aristata.
G., Sun God, 50 cts. each.
Grasses, Hardy Ornamental.
Gypsophila, Bristol Fairy, 50 cts. each.
G. paniculata compacta.
Helenium autumnale superbum.
Heliopsis helianthoides pitcheriana.

Hemerocallis · Day Lily

Select plants, 50 cts. each

Bay State.
 Gypsy.
 J. A. Crawford.
 Lemona.
 Mrs. W. H. Wyman.
 The Gem.

**Hepatica triloba.*
 **Heuchera rosmundi.*
 **H. sanguinea.*
Hibiscus moscheutos, 25 cts. and 50 cts. each.
Hollyhock, Mixed.
H., Newport Pink.
Hosta lanceolata.
H. lanceolata variegata.
H. minor alba.
H. subcordata, 50 cts. each.
 **Hypericum reptans*, 50 cts. each.
 **Iberis sempervirens.*
 **Inula ensifolia.*



German Iris make a wonderful show of color in May and June

Iris germanica
German Iris

Ambassadeur.
Andrew Jackson.
Asia.
Beacon.
Black Wings.
Blue Banner.
Bounty.
Cardinal.
Chromylla.
Corrida.
Dauntless.
Desert Gold.
Dolly Madison.
Frieda Mohr.
Gay Hussar.
Gold Imperial.
Hermitage.
Kashmir White.
La Neige.
Labor.
Lord of June.
Mildred Presby.
Moonlight.
Morning Glory.
Morning Splendor.
Queen of May.
Red Cloud.
Rob Roy.
Sea Dawn.
Selene.
Shekinah.
Tokay.
True Delight.
Violet Crown.
Iris kaempferi.
I. orientalis.
*I. pumila.
*I. pumila, Blue Beard.
I. sibirica.
*I. verna. _____
Lathyrus latifolius.
Lavandula spica.
Liatris scariosa.
Lilium elegans.
L. tigrinum.
L., Wild.

*Linum flavum.
*L. perenne.
*L. perenne album.
*Lotus corniculatus.
*Lychnis alpina.
L. coronaria.
*L. haageana.
L. viscaria splendens.
Lycoris squamigera, 50 cts. each.
*Lysimachia nummularia.
Lythrum salicaria roseum
superbum.
*Matricaria parthenoides.
*Mazus reptans.
Mertensia virginica.
Monarda didyma, Cambridge
Scarlet.
*Myosotis palustris.
*Nepeta mussini.
N., Souvenir de Andre Chaudron.
*Nierembergia gracilis.
*Ophiopogon jaburan, 25 cts. and
50 cts. each.
*O., Broad Leaf.
Paeonia, 50 cts. each.
Papaver orientale.
Pentstemon barbatus coccineus.
P. grandiflorus.
*Phlox amoena.
P. decussata, Count Zeppelin.
P. decussata, E. I. Farrington.
P. decussata, Michel Buchner.
*P. divaricata laphami.
*P. subulata.
*P. subulata alba.
*P. subulata, Apple Blossom.
*P. subulata, Asheville Blue.
*P. subulata atropurpurea.
*P. subulata vivida.
*P. sylvestris.
Physostegia virginiana vivida.
Platycodon grandiflorum mariesi.
P. grandiflorum mariesi album.
*Primula polyantha.
*Prunella grandiflora.
*P. grandiflora rosea.
Pyrethrum Hybrids.
*Ranunculus repens.

Rosmarinus officinalis.
Rudbeckia laciniata, Golden
Glow.
R. maxima.
R. newmani.
R. purpurea.
Salvia azurea.
S. greggi.
*Sanguinaria canadensis.
*Santolina chamaecyparissus.
*Saponaria ocyroides splendens.
*Saxifraga cordifolia megasi Hy-
brids.
*Sedum acre.
*S. album.
*S. dasyphyllum.
*S. kamtschaticum.
*S. obtusatum.
*S. sarmentosum.
*S. sexangulare.
*S. sieboldi.
*S. spectabilis.
*S. spectabilis, Brilliant.
*S. stolonifera.
*Sempervivum, Assorted.
*Silene wherryi.
*Stachys lanata.
*Statice latifolia.
Stokesia laevis.
Thalictrum aquilegifolium.
Thermopsis caroliniana.
*Thymus serpyllum album.
*T. serpyllum coccineus.
*T. serpyllum lanuginosus.
*T. serpyllum vulgare.
Tiarella cordifolia.
Tradescantia virginiana.
Tritoma.
*Tunica saxifraga.
*Verbena.
*Veronica incana.
V. longifolia subsessilis.
*V. repens.
V. spicata.
V. spuria elegans.
*V. teuerium, Royal Blue.
*V. teuerium rupestris.
*Viola odorata.

HOWELL NURSERIES, Knoxville, Tenn.

TELEPHONE 3-2426

PRINTED
IN
U.S.A.